

AUTO VERTICAL CUTTING MACHINES

FOR FLEXIBLE PU FOAM



MODEL V4A

The vertical bandsaw machine V4A is an automatic version of the highly popular manual V4 machine. It has been designed for the purpose of cutting small foam pieces with greater consistency and higher production than a manual machine.

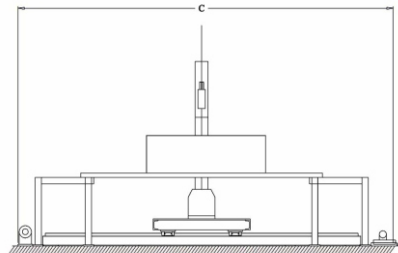
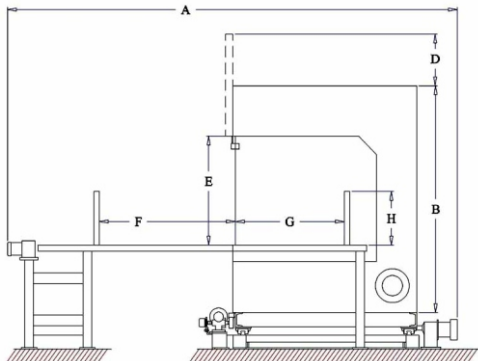
The machine has a Stationary table and the Cutting head travels to and fro, which results in saving of critical space in the factory. The foam sheets get gripped in between the twin rest plates which move together.

The size to be cut is controlled digitally through a color touch screen. The automation is controlled by PLC logic.

STANDARD EQUIPMENT

- Heavy duty Stationary table with Aluminum top.
- Motorized movement of cutting head.
- Twin rest plates for gripping the foam, having motor - driven, sideways movement.
- Motor-driven upper knife guide. Fixed lower knife guide.
- PLC Operated machine.
- Digital setting of cutting size.
- Turn table built into the outer table with motorized up and down movement & manual 360 deg. Turning.

A	B	C	D	E	F	G	H
3850mm	2540mm	3000mm	490mm	1400mm	1825mm	1220mm	600mm



SPECIFICATIONS :

CUTTING HEIGHT	1400 mm
CUTTING LENGTH	2200 mm
POWER REQUIRED	10 hp
SPACE REQUIRED	5.5x5.5 m
APPOX. WEIGHT	2000 kg.

POWER SUPPLY : 410V AC 50Hz
(Special voltage available against order)

AS Enterprises
Foam Machinery Experts

Plot No. 28/23/2, Badli, Delhi-110042 (INDIA), Ph.: +91-11-27857561, 27855570, Mob.: 9811109929

For more details visit us at: www.as-enterprises.com | www.foamconsultant.com or write: aseinfo@as-enterprises.com, asedelhi@gmail.com

INDIA'S LARGEST MANUFACTURERS & EXPORTERS OF POLYURETHANE FOAM MACHINES

The company policy aims at continuous improvement of the products, and therefore all rights to change the design and specifications without notice are reserved.

Pictures are only suggestive, actual product may look different.