



A S Enterprises
Foam Machinery Experts



VERTICAL CUTTING MACHINE

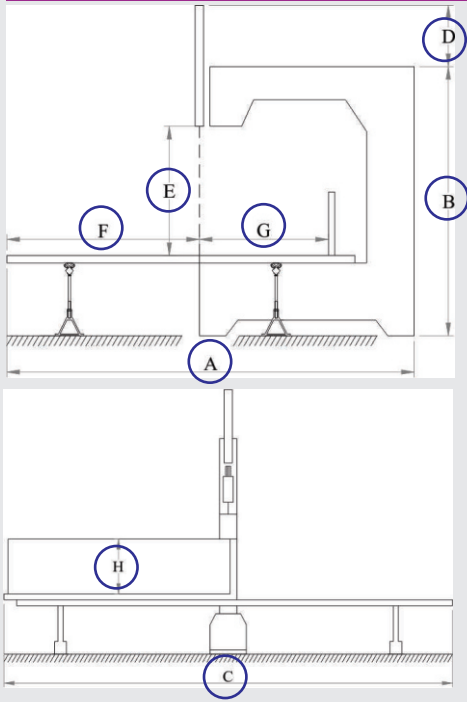
**A VERSATILE MACHINE FOR
CUTTING FLEXIBLE PU FOAM**

Heavy Duty structure.
Stainless Steel table top.

Suitable models available for
cutting Rigid foam, EVA, Rubber,
Scrub pads, Felts & even plastic
components.

INDIA'S LARGEST MANUFACTURERS & EXPORTERS OF POLYURETHANE FOAM MACHINES

VERTICAL CUTTING MACHINE MODEL: V4/V5/VLAB/V4SPL



The vertical band saw type cutting machines from ASE are designed to provide a reliable means of trimming the sides of flexible PU foam blocks, and to resize bigger blocks to the desired sizes as per market requirements.

These machines are also used for cutting thick sheets & sofa cushions. The cutting accuracy of these machines is +/- 2mm.

We offer vertical machines in various standard sizes and also customize the machines as per specific needs of our customers

STANDARD EQUIPMENT

- Stationary slitting section with four balanced blade-wheels
- Strong table frame on bearing slides for easy operation
- Motorized grinding attachment with adjustable cup stones*
- Adjustable rest plate with position locking mechanism
- Steel scale attached for setting the foam thickness
- Motorized upper band knife guide
- Fixed lower guide • Electric blade drive motor
- Aluminum table top for free movement of P.U. foam blocks
- Manual emergency break for table.*
- Electric panel with push button station

SAFETY FEATURES

- Emergency cut off switch • Blade ON warning light • Protection covers for blade • Safety fence for operator

MODEL	A	B	C	D	E	F	G	H
V4	3850 mm	2540 mm	5300 mm	490 mm	1400 mm	1825 mm	1250 mm	600 mm
V5	5200 mm	2830 mm	5300 mm	490 mm	1700 mm	1825 mm	1825 mm	914 mm
VLAB	1400 mm	1565 mm	1850 mm	410 mm	600 mm	650 mm	500 mm	200 mm
V4SPL	3850 mm	1690 mm	5300 mm	150 mm	350 mm	1825 mm	1250 mm	200 mm

SPECIFICATION	MODEL V4	MODEL V5	MODEL VLAB	MODEL V4SPL
CUTTING HEIGHT	1400 mm	1700 mm	600 mm	350 mm
CUTTING LENGTH	2200 mm	2200 mm	1000mm	2200 mm
POWER REQUIRED	2.25 hp	3.25 hp	1hp	2.25 hp
SPACE REQUIRED	4.2x5.5 m	5.5x5.5 m	2x3 m	5.5x6.5 m
WEIGHT(Approx.)	1300 kg.	2000 kg.	400 kg.	1200 kg.

POWER SUPPLY: 410V AC 50HZ.

* These features are not part of the lab model machine.



Plot No. 28/23/2, Village Badli, Delhi-110042 (INDIA), Ph.: +91-11-27857561, 27855570, 27296446 Mob.: 9811109929

For more details visit us at: www.as-enterprises.com | www.foamconsultant.com or write: aseinfo@as-enterprises.com, asedelhi@gmail.com

INDIA'S LARGEST MANUFACTURERS & EXPORTERS OF POLYURETHANE FOAM MACHINES

The company policy aims at continuous improvement of the products, and therefore all rights to change the design and specifications without notice are reserved.
Pictures are only suggestive, actual machine may look different.